

# LUXURY

## HOME PLANS

101

*stunning home designs*

\$10.95 Printed in the U.S.A.



Display until December 31, 2007

[www.houseplansandmore.com](http://www.houseplansandmore.com)

# LUXURIOUS OPEN LIVING AREA

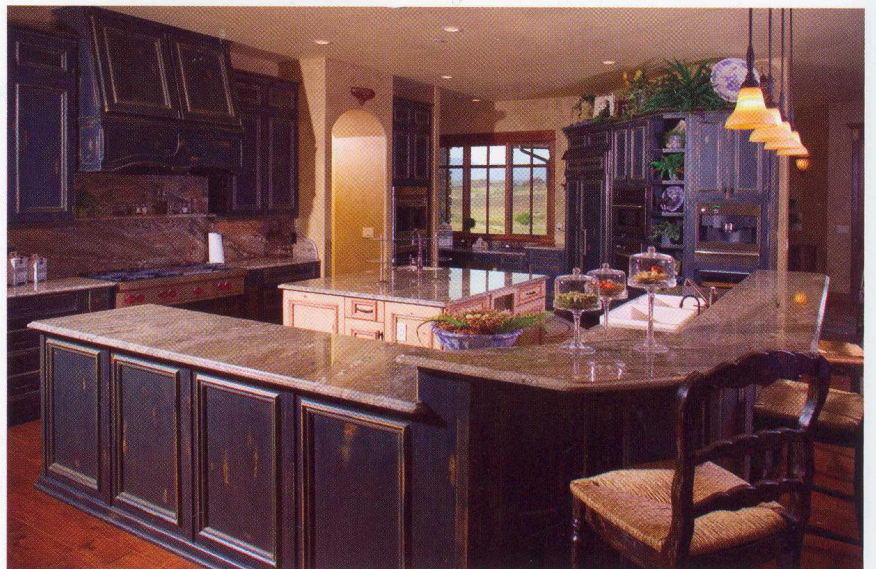
---



---

PLAN NUMBER 589-101S-0005

*Photo, right - The feeling of an older home has been created thanks to the distressed style finish of the dark cabinetry. It makes the home feel casual and lived in, perfect for family and friends.*

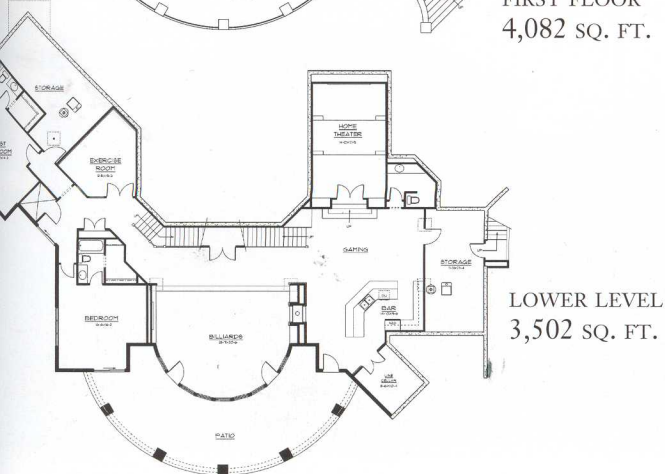
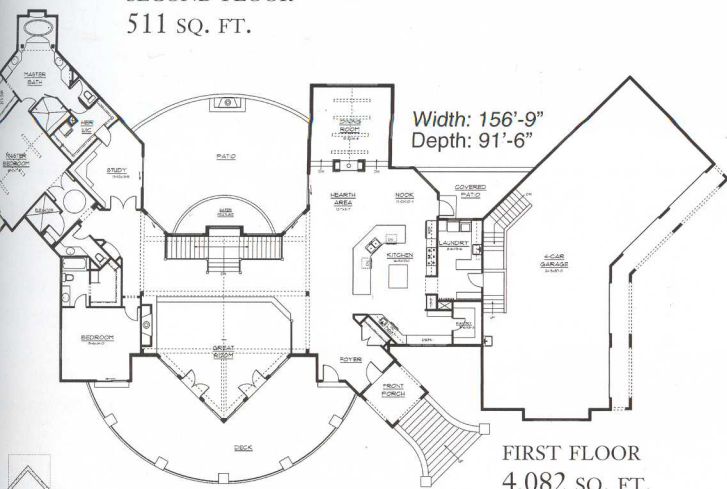




*Photo, above - The rustic trim around the windows in the dining room enhances the gorgeous view of the outdoors.*

*Photo, left - Handsome rustic beams top the vaulted great room creating a lodge-like atmosphere. Add the wall of ceiling-to-floor windows and a stone and brick fireplace and you have a cozy retreat you will never want to leave.*

OPTIONAL  
SECOND FLOOR  
511 SQ. FT.



7,584  
TOTAL SQUARE FEET OF LIVING AREA

4 BEDROOMS

4 FULL BATHS

2 HALF BATHS

4-CAR SIDE ENTRY GARAGE

WALK-OUT BASEMENT FOUNDATION

PRICE CODE S4

ORDER  
PAGE 240

WWW.HOUSEPLANSANDMORE.COM